



Ningbo Rotie Metal Parts Co., Ltd.

Mining parts
Casting parts
Machining parts
Contruction parts



Ningbo Rotie Metal Parts Co., Ltd.

Fax: +86-574-83067026

Tel: +86-574-83067126

Mob: +86 18768594818

Email: sales@rtmetalparts.com

Add: Room 2668, North block, No.1299 eastern segment of Yinxian Avenue, Yinzhou District, Ningbo city, Zhejiang province, China

Web: www.rtmetalparts.com



Company profile

Ningbo Rotie founded in 2010 and located in Yinzhou District, Ningbo City, Zhejiang Province, China. It is about 50KM from Ningbo Beilun Port, one of China's largest ports. The transportation is very convenient.

Ningbo Rotie is a professional manufacturing company specializing in the design, development, production and machining of mining and tunnelling components, post tensioning system components etc. It has 3 foundries and 4 machining factories. The company mainly produces Grey cast iron and ductile iron, as well as carbon steel, stainless steel, aluminum, copper machining.

Ningbo Rotie's production equipment has 2 automatic molding machines, 3 machining centers, 50 CNC machines, 5 rocker drills, 4 automatic milling machines, 20 tapping machines, 2 cutting machines and so on. Our inspection equipment includes 2 metallographic analysis, 2 stretching machines, 2 hydraulic presses, 3 Brinell hardness testers, 3 Leeb hardness testers, 1 projector, 1 magnetic particle flaw detector and so on.

Ningbo Rotie has ISO9001 quality system certification and SGS certification.

The company is committed to the production of metal parts between 2-100KG, the products are mainly used in mining, tunneling, infrastructure, construction and bridge industries, direct or indirect exports of about 90%, exported to the United States, Australia, the Middle East, Europe and other countries. And places, products enjoy a good reputation in the international market.

Technology changes society, and Ningbo Rotie will support the development of the worldwide.

宁波诺钛金属部件有限公司

宁波诺钛创建于2010年，公司坐落于中国浙江省宁波市鄞州区，距离中国最大的港口之一北仑港约50KM，交通运输极为方便。

宁波诺钛是一家专业于制造矿山隧道配件，预应力系统配件等产品的设计、开发、生产及精加工为一体的专业化制造公司，旗下有三家铸造厂和四家精加工工厂，公司主要生产灰口铸铁和球墨铸铁，以及碳钢、不锈钢、铝、铜的精加工。

宁波诺钛生产设备有全自动造型机两台，加工中心三台，数控50台，摇臂钻5台，全自动铣床4台，攻丝机20台，锯床2台等等。我司的检验设备有金相分析2台，拉伸机2台，油压机2台，布氏硬度计3台，里氏硬度计3台，投影仪1台，磁粉探伤仪1台等等。

宁波诺钛拥有ISO9001质量体系认证，以及SGS的认证证书等。

本公司致力于生产2-100KG之间金属部件，产品主要适用于矿山，隧道，基建，建筑及桥梁等行业，直接或间接出口量为90%左右，远销美国，澳大利亚，中东，欧洲等国家和地区，产品在国际市场上享有良好的声誉。

技术改变社会，诺钛将支持全世界的发展。



宁波诺钛金属部件有限公司
Ningbo Rotie Metal Parts Co., Ltd.

采矿工件
Mining Parts



采矿工件
Mining Parts

铸造工件
Casting Parts

铸造工件
Casting Parts



机加工件
Machining Parts



机加工件
Machining Parts

建筑工件
Contruction Parts

建筑工件
Contruction Parts





采矿工件



▲ Barrel - 45# steel



▲ Anchor bolts - 45# steel



▲ Anchor Bolts - 45# steel



▲ spherical nuts - 45# steel



▲ Anchor nuts - 45# steel



▲ Spherical nuts - ductile iron



▲ Grouting bell - casting steel



▲ Collar bushing - 45# steel



▲ Thread fitting



▲ Plug - 45# steel



▲ Spherical nut - 45# steel



▲ Expansion shell - 45# steel



▲ Expansion shell - 45# steel



▲ Expansion shell - 45# steel



▲ Expansion shell - 45# steel

Mining Parts

Rotie anchor systems and components for mining and tunnelling application.

Ningbo Rotie anchor systems are used in various ways in mining and tunnelling constructions and serve to optimize traffic routes or mine raw materials. Dependent on the construction system used, geology of the surrounding rock and hydrological conditions underground, we offer a variety of anchor systems to meet specific project requirements, which are all customtailored to satisfy individual project requirements. The main products of our anchoring system are expansion shell, rock bolts, thread bar, spherical nuts and so on.

诺钛锚固系统及配件

宁波诺钛专业于生产矿山和隧道的应用部件，我们的锚固系统以各种方式用于采矿和隧道施工，并用于优化交通路线或采矿原材料，根据所使用的施工系统，周围岩石的地质和地下水条件，我们提供各种锚固系统及配件，以满足特定的项目要求，并且针对个别特殊项目要求，我们的锚固系统是定制化的，主要产品有膨胀体、锚杆、螺纹钢、球帽等等。



铸造工件



▲ Casting parts- casting steel



▲ Casting parts- casting steel



▲ Casting parts- casting steel



▲ Casting parts-ductile iron



▲ Casting parts-ductile iron



▲ Casting parts-ductile iron



▲ Casting parts-ductile iron



▲ Casting parts-ductile iron



▲ Casting parts-grey iron



▲ Casting parts-grey iron



▲ Casting parts-grey iron



▲ Casting parts-grey iron



▲ Casting parts-grey iron



▲ Casting parts-ductile iron



▲ Casting parts-grey iron

Casting Parts

www.rtmetalparts.com

Ningbo Rotie is specialized in the production of castings. There are three main production plants, two of which are iron casting parts, including grey iron and ductile iron, and the other is mainly made of steel casting parts, including carbon steel and stainless steel. Our castings are used in a variety of industries around the world, including construction, shipping, mining and civil engineering.

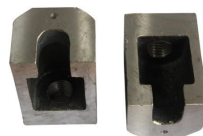
宁波诺钛致力于生产铸造件，主要有三个生产工厂，其中两家工厂是生产铸铁件，包括灰口铸铁和球墨铸铁，另外一家是生产铸钢件为主，包括碳钢和不锈钢等，我们的铸件运用于全世界的各个行业，包括建筑，船舶，矿山以及土建等等。



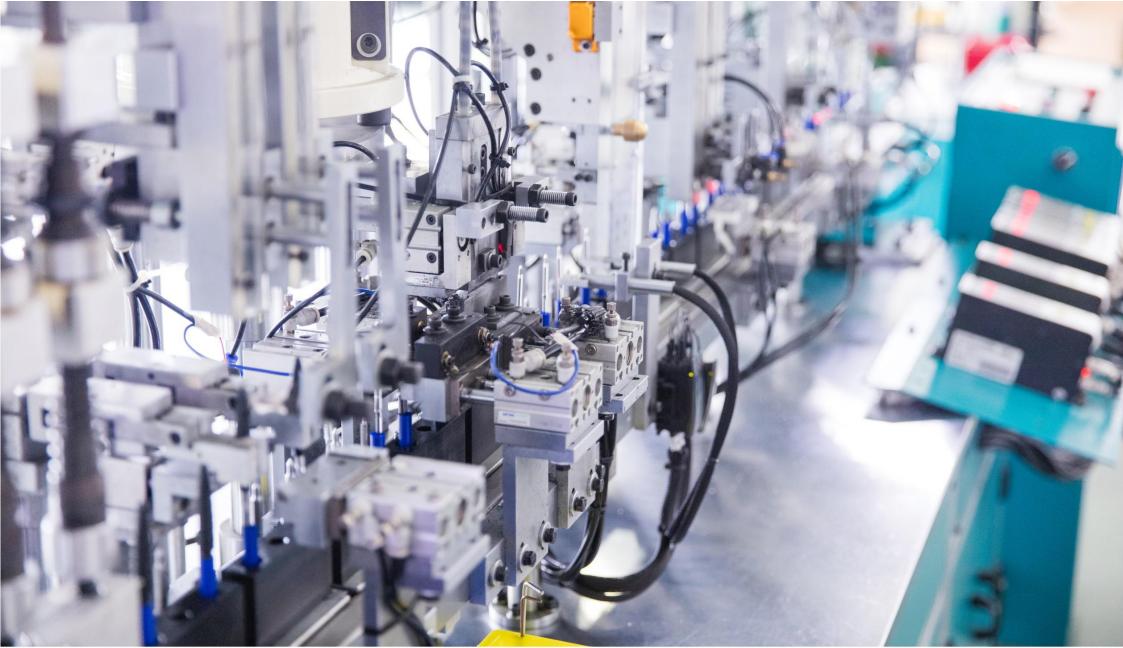
▲ Casting parts-ductile iron



▲ Casting parts- casting steel



▲ Casting parts- casting steel



机加工件



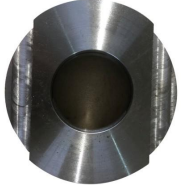
▲ Machining parts with black 20# steel



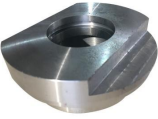
▲ Machining parts - 45# steel



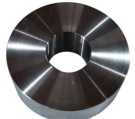
▲ Machining parts _ carbon steel



▲ Machining parts - 35# steel



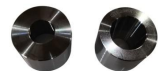
▲ Machining parts - 35# steel



▲ Machining Parts - 40# steel



▲ Machining parts - 20# steel



▲ Machining parts - 45# steel



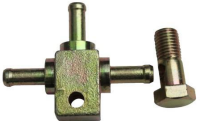
▲ Machining parts - 45# steel



▲ Machining parts - mild steel



▲ Machining parts with welding 20# steel



▲ Hydraulic fitting - 45# steel



▲ Hydraulic fitting - 45# steel



▲ Machining parts - 45# steel



▲ Hydraulic fitting - 45# steel

Machining Parts

www.rtmetalparts.com

Ningbo Rotie has a strong machining capability, we have four machine processing plants, We effectively support you with a range of manufacturing capabilities that take your products from concept to production and give you the right solution for your application. With a clear understanding of specific requirements and knowledge of your industry, our innovative design and engineering capabilities enable us to provide competitive solutions in terms of cost, design, technology and delivery. Our facilities, equipment and automation are capable of performing all secondary and finishing operations for high- and low-volume orders as needed. Our machining capabilities include: Turning, Drilling, Milling, Tapping, Broaching, Shaping, Grinding, Polishing, Surface treatment, Assembly.

宁波诺钛具有很强的机加工能力，我们拥有四家机加工厂，我们为您提供一系列制造能力，使您的产品从概念到生产，并为您的应用提供合适的解决方案。通过清楚地了解您所在行业的具体要求和知识，我们的创新设计和工程能力使我们能够在成本，设计，技术和交付方面提供具有竞争力的解决方案。我们的设施，设备和自动化能够根据需要执行高容量和低容量订单的所有二次和精加工操作。我们的机加工能力包括：车削，钻孔，磨，攻丝，拉床，成型，磨碎，抛光，表面处理，组装。



建筑工件



▲ 27x0.5' anchor head - 45# steel



▲ 7x0.5' Anchor head - 45# steel



▲ 19x0.5' anchor head - 45# steel



▲ 7x0.5' Anchor head - 45# steel



▲ 4x0.6' anchor head - 45# steel



▲ 7x0.5' anchor head - 45# steel



▲ 5x0.5' anchor head - Ductile iron



▲ 5x0.5' anchor head - ductile iron



▲ 3x0.5' anchor head - ductile iron



▲ 4x0.6' anchor head - 45# steel



▲ 0.5' Barrel - 45# steel



▲ 4x0.5' anchor head - ductile iron



▲ 5x0.5' flat anchor casting grey iron



▲ 2x0.6' anchor head - 45# steel



▲ 3x0.5' anchor head - 45# steel

Contruction Parts

www.rtmetalparts.com

Ningbo Rotie is dedicated to the production of post tensioning systems, an efficient structural reinforcement system that offers many benefits and repair applications in a variety of buildings. And it can be applied to all types of structures, including general buildings, bridges, decks, pavements and other geotechnical applications. The components that we produce mainly contain anchor head, anchor body, wedges, berrals, etc.

宁波诺钛是专门致力于生产预应力系统，预应力系统是一种高效的结构加固系统，在各种建筑中提供许多好处和修理应用。并且它可以应用于所有类型的结构，包括一般建筑物，桥梁，甲板，路面和其他岩土工程应用。我们生产的部件主要包含anchor head, anchor body, wedges, berrals, etc.



▲ flat anchor- casting iron



▲ 5x0.5 flat anchor head Ductile iron



▲ 5x0.5' flat anchor casting Grey iron

Team Introduction

Ningbo Rotie has a young and energetic team, fully support the development of the company.

Name: Ren Hongguo
Title: Chairman & Managing director
Cell: +86 18768594818
E-mail: ren.hg@rtmetalparts.com

Name: Tina Qiu
Title: Sales
Cell: +86 15888025881
E-mail: rotie02@rtmetalparts.com

Name: Choice Bao
Title: Sales manager
Cell: +86 13777953266
E-mail: choice.bao@rtmetalparts.com

Name: Aaron Ren
Title: Sales
Cell: +86 17826893962
E-mail: aaron.ren@rtmetalparts.com

宁波诺钛拥有一支年轻而又有活力的团队，全力支持本公司的发展。

姓名: 任红国
职务: 董事长兼总经理
手机: +86 18768594818
邮箱地址: ren.hg@rtmetalparts.com

姓名: 裘娜
职务: 销售
手机: +86 15888025881
邮箱地址: rotie02@rtmetalparts.com

姓名: 鲍选择
职务: 业务经理
手机: +86 13777953266
邮箱地址: choice.bao@rtmetalparts.com

姓名: 任成杰
职务: 销售
手机: +86 17826893962
邮箱地址: aaron.ren@rtmetalparts.com



www.rtmetalparts.com

